



## **Introduction**

The Public Authority for Industry of the State of Kuwait (PAI) has implemented the ‘**Kuwait Conformity Assurance Scheme**’ (KUCAS) as of 17 June, 2006. The scheme is a set of procedures carried out by PAI to verify the conformity of all ‘**Regulated Products**’ to Kuwait’s Technical Regulations applicable to imported and domestic products alike in accordance with the regulations of this scheme.

## **1. REGULATED PRODUCTS**

All the products listed in Appendix A are subject to the technical requirements and Kuwaiti Standards that have been adopted as mandatory Technical Regulations for the protection and safety of the Kuwaiti consumer and prevention of deceptive practices, in accordance with the ‘Standards Unification Law’ which grants PAI the authority for preparation, adoption and application of standards for all products on the Kuwaiti market. These Regulated Products have been classified into (2) classes:

- ❖ **Process Manufactured Products:** These products are characterized by susceptibility to change in their final nature as a result of probable changes in the nature of the raw materials used and the manufacturing process controls, whereby production is organized in batches. As such, these products are classified as high-risk products requiring frequent verification of conformity.
- ❖ **Non-Process Manufactured Products:** These products are characterized by low probability of change in the nature of the final product in comparison with a ‘typical’ sample of that product, thereby allowing for low frequency of testing for verification of conformity.

### **A. IMPORTED PRODUCTS**

All consignments of imported ‘Regulated Products’ are subject to conformity assurance procedures via one of the following (2) routes:

- 1) Procedures at the Exporting Country: Manufacturer or exporter completes conformity procedures at the Exporting Country through one of the Certification/Inspection Bodies that have been approved by PAI in accordance with PAI’s predetermined criteria (‘Approved CIB’).
- 2) Local Procedures: Importer completes conformity procedures upon arrival of consignments of Regulated Products at Kuwaiti Ports through KUCAS ‘Conformity Unit’ under the Standards & Metrology Department at PAI.

## **2. TEST REPORTS & TECHNICAL EVALUATION**

All exporters or importers of Regulated Products must submit evidence that their products have been successfully tested in accordance with the technical requirements of the sanctioned Kuwaiti mandatory standards and technical regulations by exercising one of the following (2) options:

- a) At the Exporting Country: Manufacturer or exporter submits a ‘**Self Declaration**’ specifying the standards/requirements that his product(s) conforms to, supported by ‘**Test Reports**’ evidencing that a ‘complete test’ was performed on the product in accordance with the



sanctioned standards and technical regulations, issued by one of the laboratories ‘accredited’ in the relevant scope by an authorized accreditation body in the exporting country.

In case of frequent exporting of the Regulated Product, and in order to avoid subjecting the product to ‘full testing’ in subsequent consignments, the exporter can apply to the Approved CIB for obtaining a ‘**Technical Evaluation Report**’ (TER) based on the ‘full tests’, valid for (2) years from the date of the test report or (3) years for CB Reports for electrical products. In case the Product has been granted an internationally recognized Quality Mark, and neither the product has changed nor the applicable standard upgraded or amended, the test report is valid for the same period deemed valid by the Certification Body that has granted the Quality Mark.

b) Locally: PAI draws a sample from the consignment after arrival at the Kuwaiti Port and conducts ‘full testing’ on it at PAI laboratories in accordance with the sanctioned standards and technical regulations. Upon successful testing, a ‘**Test Report**’ is issued. However, if the product fails the lab test, it is considered as non-conforming, and a ‘**Re-Export<sup>2</sup> Order**’ is issued, which is notified to the importer for him to comply with.

In case of frequent importing of the Regulated Product, and in order to avoid subjecting the product to ‘full testing’ in subsequent consignments, the importer can apply to PAI for obtaining a ‘**Technical Evaluation Certificate**’ (TEC) based on the ‘full test’. The TEC would be valid for (2) years from the date of the test report

### **3. TECHNICAL INSPECTION**

Technical Inspection involves verification that all the requirements of the applicable standards that can be visually checked are satisfied (such as volume/weight of container/package and markings, voltage rating and plug configuration ...etc). All consignments of Regulated Products that had obtained a ‘Technical Evaluation Certificate’ must be subjected to selective ‘Technical Inspection’ either prior to shipment by the same ‘Approved CIB’ that has tested the product or issued the ‘Technical Evaluation Report’ at the exporting country (per A1 above), or upon arrival of the consignment to one of Kuwait’s Ports by PAI’s KUCAS ‘Conformity Unit’ in the case of local conformity procedures (per A2 above). Consignments are selected for Technical Inspection, and a decision is rendered of whether to draw samples for testing, in accordance with the ‘**Risk Assessment<sup>1</sup> System**’ in effect. For ‘Non-Process’ class products, random samples may be drawn from consignments from time-to-time and tested partially for conformity of the ‘essential requirements’ to verify continued conformity. On the other hand, consignments of ‘Process’ class products are subject to frequent drawing of samples and testing either to verify conformity to the ‘essential requirements’ or to the full requirements from time to time.

### **4. PROCEDURAL STEPS**

Upon arrival to Kuwait’s Ports or Customs boarder check points, consignments of ‘Regulated Products’ are referred by the Customs authorities to the KUCAS ‘Conformity Unit’ in order to obtain a ‘**Certificate of Conformity**’ or a ‘**Clearance Approval**’, any of which is a pre-condition for obtaining final customs clearance and allowing the products to be offered for sale on the Kuwaiti market.



The 'Conformity Unit' reviews the relevant shipping documents and, if the consignment has obtained a 'Technical Inspection Report' (TIR) from the 'Approved CIB' in the exporting country, PAI would then issue a '**Clearance Approval**' for it; in the case of local conformity evaluation, the 'Conformity Unit' conducts all 'Technical Inspection' and/or 'Testing' procedures and issues '**Certificate of Conformity**' or '**Clearance Approval**' in accordance with the '**Risk Assessment<sup>1</sup> System**' in effect. In cases where 'Testing' is required in addition to technical inspection, the inspector draws a random sample from the consignment and sends it for testing at PAI Laboratory in Kuwait. Whenever testing requires more than (4) days to be completed, KUCAS 'Conformity Unit' issues a '**Temporary Clearance<sup>2</sup> Approval**' allowing the importer to clear the consignment from Customs, unload and store it in his warehouses against a written '**Importer's Undertaking**' not to dispose of, or make any alterations to it until the test result is issued; if the product passes the lab test, KUCAS 'Conformity Unit' issues a '**Certificate of Conformity**' which enables the importer to offer the product for sale on the Kuwaiti market. However, if the product fails the lab test, the product is considered as non-conforming, and a '**Re-Export<sup>2</sup> Order**' is issued, which is notified to the importer for complying with it.

All compliance steps are demonstrated in the flow diagram – figure (A).

## **5. MOTOR VEHICLES**

All Kuwaiti Authorized Distributors of motor vehicles are required to obtain Gulf Conformity Certificates (GCC) as a precondition for importing all their motor vehicle models into Kuwait. Used vehicles and new vehicles not holding GCC certificates are subject to technical inspection in accordance with PAI's approved checklist. This is done either through issuance of a **TIR** by one of the Approved CIBs at the Exporting Country, based on which PAI Conformity Unit issues '**Clearance Approval**', or through local Technical Inspection by PAI Conformity Unit and issuance of '**Certificate of Conformity**'.

### **B – LOCALLY MANUFACTURED PRODUCTS**

Locally manufactured Regulated Products not holding 'Kuwait Quality Mark' license are subject to the same conformity procedures described above, with the difference that whenever 'Technical Inspection' and/or 'Testing' is required, it is performed on a random completed product drawn from the production line or from any batches that are ready for to be dispatched to the market. In case the product fails to meet the requirements of the applicable standards, a '**Production Suspension and Product Recall**' order is issued and notified to the manufacturer, who has to advertise the products that are subject to recall and the relevant recall procedures in the official gazette and in two other daily newspapers. The manufacturer is under obligation to make the necessary rectification of deficiencies in all the stocked and recalled quantities before being allowed to re-market the product. In case this is not feasible, the manufacturer has to either destroy all quantities or export them. Production is not allowed to be resumed unless evidence is presented that the necessary modification on the product and/or the manufacturing process have been performed and supported by test reports evidencing conformity. The process is all carried out under the supervision of a 'KUCAS Inspector'.



Note: The manufacturer has to obtain 'Approval to Market' for his product as a pre-condition for renewal of his annual manufacturing license. This approval is only granted for manufacturers that have demonstrated their compliance with KUCAS, or Kuwait Quality Mark Scheme.

## **C – MARKET SURVEILLANCE**

'Market Surveillance' is carried out by the 'Conformity Unit' through its KUCAS inspectors who are dispatched to pick random samples of the 'Regulated Products' from the market which the 'Risk Assessment System' considers as high risk. This is done in cooperation with the 'Directorate of Consumer Protection' at the Ministry of Commerce & Industry. If any of these products fail 'Technical Inspection' or 'Testing', and if this product has entered the market as an import, a '**Product Recall and Re-Export Order**' notified to the importer for him to comply; however, if this product is locally manufactured, a '**Production Suspension and Product Recall Order**' is issued and notified to the manufacturer, notwithstanding any Certificates of Conformity previously issued for that product. In both cases, all other subsequent procedures are applied as above.

## **D - EXCEPTIONS**

The following 'Regulated Products' are exempted from any KUCAS conformity procedures:

- Products holding 'Kuwait Quality Mark'
- New motor vehicles holding 'GCC Conformity Certificates'
- Diplomatic cars imported by foreign Embassies
- Products imported in small non-commercial quantities
- Products imported on a temporary basis (e.g. for display purpose)
- Products forming contents of large industrial or government projects

In addition, Tyres holding 'GCC Conformity Certificates' are exempted from the 'Technical Evaluation Certificate'.

<sup>1</sup>**Note:** In case the importer or manufacturer submits evidence that the factories of the Regulated Product have a Quality Control System in place such as ISO 9000 Certification or equivalent, the 'Risk Assessment System' takes this into consideration by reducing the frequency of Testing applied.

<sup>2</sup>**Warning:** In case a '**Re-Export<sup>2</sup> Order**' is issued, the importer is obliged to submit evidence that the relevant consignment has been re-exported in full within (2) weeks of the date of the order.

All cases of product conformity violations inside Kuwait are referred to Commercial Prosecution for legal action, as well as cases where the importer disposes, fully or partially, of any consignments that had been released and bonded in his warehouses on a 'Temporary Clearance' basis, or, if the importer fails to execute a 'Re-Export Order' or 'Production Suspension and Product Recall Order' issued by PAI.

## The Regulated Product List

### GROUP I: ELECTRICAL TOYS

Pr.No.	Item (Class: Non-Process)	Harmonised System Commodity Codes
I-01	ELECTRIC & BATTERY OPERATED TOYS	9503 / 9506.21

### GROUP II: HOUSEHOLD & COMMERCIAL ELECTRICAL & GAS APPLIANCES

Pr.No.	Item (Class: Non-Process)	Harmonised System Commodity Codes
II-01	WINDOW and SPLIT AIR CONDITIONERS	8415.10
II-02	HOUSEHOLD & PROFESSIONAL COMBINED FUNCTION AUDIO AND/OR VIDEO SYSTEMS incl. STEREO SYSTEMS, RECORDERS WITH RADIOS AND/OR CD/VCD/DVD	Combinations of II-03, II-04, II-41, II-43, 8527.31
II-03	HOUSEHOLD & PROFESSIONAL STAND-ALONE AUDIO PRODUCTS (EXCEPT RADIO RECEIVERS) incl. AMPLIFIERS, STAND ALONE RECORDERS & MP3 PLAYERS	8518.40 / 8518.50 / 8519 / 8520
II-04	HOUSEHOLD & PROFESSIONAL STAND ALONE VIDEO PLAYING AND RECORDING SYSTEMS incl. VCD, DVD, MP4 PLAYERS, DIGITAL STILL & VIDEO CAMERAS, PROJECTORS AND VIDEO GAMES	8521 / 8525.40 / 8528.30 / 9504.10
II-05	GENERATOR SETS, GASOLINE & DIESEL ENGINE DRIVEN UP TO 10 KW	8501.61 / 8502.11 / 8502.20
II-06	ELECTRIC MOTORS UP TO 10 KW	8501.10
II-07	TREAD-MILLS AND FITNESS TRAINING MACHINES	9504.90.40
II-08	HOUSEHOLD & COMMERCIAL ELECTRO-THERMIC COOKING APPLIANCES (OTHER THAN OVENS) incl. RICE COOKERS, DEEP FRYERS, WARMING PLATES, TOASTERS, POPCORN MAKERS, ROASTERS, GRILLS AND BARBECUES AND THE LIKE UP TO 3500 WATTS AND LIQUIFIED PETROLEUM GAS BURNING APPLIANCES HAVING ELECTRICAL CONNECTIONS	8419.81 / 8516.60 / 8516.72 / 8516.79
II-09	DOMESTIC CLOTHES WASHING MACHINES, DOMESTIC & COMMERCIAL DISH-WASHING MACHINES & RINSING SINKS	8450 / 8422.11
II-10	DOMESTIC CLOTHES DRYING MACHINES & ELECTRIC TOWEL RAILS	8451.21
II-11	HOUSEHOLD ELECTRIC IRONS, IRONERS AND FABRIC STEAMERS UP TO 3500 WATTS.	8451.30 / 8516.40
II-12	HOUSEHOLD & COMMERCIAL ELECTROMECHANICAL KITCHEN APPLIANCES incl. KNEADERS, FOOD PROCESSORS, MILLS, GRINDERS, BLENDERS, MIXERS, JUICERS, BEATERS, SHAKERS, WHIPPERS, CHURNS, ICE CREAM MAKERS, PEELERS, SLICERS, SHARPENERS, CAN OPENERS, WASTE DISPOSERS AND THE LIKE UP TO 3500 WATTS	8509.30 / 8509.40 / 8509.80
II-13	PERSONAL CARE/GROOMING APPLIANCES (SHAVERS, HAIR CLIPPERS, HAIR-REMOVERS, MASSAGERS, SKIN CARE APPLIANCES, FACE STEAMERS, ELECTRIC TOOTH BRUSHES AND ORAL HYGIENE incl. RECHARGEABLE	8509.80 / 8510 / 9019.10 /
II-15	HOUSEHOLD & COMMERCIAL MICROWAVE OVENS	8516.50



**Public Authority for Industry**  
**Kuwait Conformity Assurance Scheme (KUCAS)**  
**Guidelines**

13 July 2008



Pr.No.	Item (Class: Non-Process)	Harmonised System Commodity Codes
II-16	<b>HOUSEHOLD &amp; COMMERCIAL</b> ELECTRIC RANGES, HOB ASSEMBLIES, STATIONARY OVENS INCLUDING INTEGRATED ELECTRIC HOODS UP TO 7500 WATT AND LIQUIFIED PETROLEUM GAS BURNING APPLIANCES HAVING ELECTRICAL CONNECTIONS	8516.60 / 7321
II-17	<b>ELECTRIC OFFICE MACHINES</b> incl. PHOTOCOPIERS, PAPER SHREDDERS, STAPLERS, SHARPENERS ...ETC.	8443.39 / 8470 / 8472 /
II-18	<b>IT EQUIPMENT</b> incl. COMPUTERS (DESKTOPS & LAPTOPS), PRINTERS, SCANNERS	8443.31 / 8443.32 / 8471.30 / 8471.41 / 8471.60.80
II-19	POWER TRANSFORMERS, <b>VOLTAGE REGULATORS</b> & STABILIZERS UP TO 1000 VA	8504.31 / 9032.89
II-20	<b>HOUSEHOLD &amp; COMMERCIAL</b> REFRIGERATORS AND FREEZERS incl. REFRIGERATING DISPLAY CABINETS UP TO 15 AMPS	8418.10 / 8418.21 / 8418.22 / 8418.29 / 8418.30 / 8418.40 / 8418.50 / 8418.61.65 / 8418.61.75
II-21*	<b>ELECTRIC TELECOM EQUIPMENT</b> incl. INTERCOMS, STD. & CORDLESS PHONES, MOBILE PHONES, <b>STAND ALONE FAXES &amp; MODEMS</b>	8517.11 / 8517.19 / 8517.80.10.10 / 8525.20.70
II-22	PVC, XLPE <b>RUBBER &amp; SILICON</b> INSULATED ELECTRIC POWER <b>WIRES</b> & CABLES UP TO 35MM <sup>2</sup> AND 1000V, EXTENSION CABLE CORDS AND CABLE REELS, <b>WINDING WIRES</b>	8544.11 / 8544.19 / 8544.42 / 8544.49
II-23	<b>HOUSEHOLD &amp; COMMERCIAL</b> VACUUM CLEANERS, WATER SUCTION APPLIANCES, SURFACE CLEANING APPLIANCES AND FLOOR TREATMENT APPLIANCES INCL. SHAMPOOERS UP TO 3500 WATTS	8479.89 / 8509.10 / 8509.20 / 8509.80
II-24	HOUSEHOLD ELECTRIC HEATERS	8516.21 / 8516.29
II-25	DRINKING WATER COOLERS AND FOUNTAINS	8418.69.20
II-26	DESERT COOLERS AND HUMIDIFIERS	8415.83.90 / 8509.80.50
II-27	<b>DOMESTIC &amp; COMMERCIAL</b> ELECTRIC FANS, AIR CURTAINS, EXTRACTORS, STAND-ALONE RANGE HOODS AND AIR-PURIFIERS UP TO 500 WATTS	8414.51 / 8414.59.60.60 / 8414.60 / 8421.39.80.15
II-29	<b>HOUSEHOLD &amp; COMMERCIAL</b> APPLIANCES FOR HEATING LIQUIDS incl TEA AND COFFEE BREWING APPLIANCES UP TO 3500 WATTS	8516.71
II-30	LAMP HOLDERS WHETHER SEPARATE OR FORMING PART OF LUMINAIRES AND CHANDELIERS	8536.61 / 9405
II-31	MANUALLY OPERATED HOUSEHOLD SWITCHES, <b>APPLIANCE SWITCHES, CIRCUIT BREAKERS (MCB &amp; MCCB)</b> , EARTH LEAKAGE CIRCUIT BREAKERS, <b>ISOLATOR SWITCHES</b> UP TO 100A, CONNECTION UNITS, CEILING ROSES, COOKER CONTROL UNITS UP TO 45A, & FUSES FOR PLUGS UP TO 13A	8536.10 / 8536.20 / 8536.50
II-32	INCANDESCENT, FLUORESCENT, DISCHARGE, <b>LED &amp; MISC.</b> LAMPS	8539.21.40 / 8539.22 / 8539.29.40 / 8539.31 / 8539.32 / 8541.40.20 / 8543.89.70
II-35	<b>DOMESTIC &amp; INDUSTRIAL</b> GENERAL USE MAINS PLUGS, SOCKET OUTLETS, MAINS CONFIGURATION ADAPTERS AND POWERTRACK SYSTEMS	8536.69
II-39	<b>HOUSEHOLD &amp; PROFESSIONAL</b> HAIR CARE EQUIPMENT (incl. HAND-HELD HAIR DRYERS AND STEAMERS, HAIR CURLERS, WAVING APPARATUS, CURLING TONG HEATERS) AND HAND DRYERS UP TO 3500 WATTS	8516.31 / 8516.32 / 8516.33
II-40	DOMESTIC <b>HORIZONTAL AND SUBMERSIBLE</b> WATER PUMPS UP TO 3.5 KW	8413.70.20 / 8413.81.20
II-41	SATELLITE RECEIVERS, TV SETS, VIDEO & PC MONITORS	8528.12 / 8528.13 / 8528.21 / 8528.22

**Public Authority for Industry**  
**Kuwait Conformity Assurance Scheme (KUCAS)**  
**Guidelines**

13 July 2008



Pr.No.	Item (Class: Non-Process)	Harmonised System Commodity Codes
II-42	AC TO DC POWER ADAPTORS, POWER SUPPLIES, BATTERY CHARGERS, EMERGENCY LIGHTING AND UPS UP TO 1000 VA, <b>NEON TRANSFORMERS</b> , BALLASTS, <b>CONVERTERS &amp; STARTERS</b> FOR LAMPS	8504.10 / 8504.40
II-43	STAND ALONE RADIO RECEIVERS AND ELECTRIC CLOCKS	8527.32 / 8527.39 / 9105.11 / 9103.10 / 9105.21 / 9105.91
II-44	WATER HEATERS INSTANT AND STORAGE TYPES UP TO 600 LITRES	8516.10
II-46	ELECTRIC <b>HOUSEHOLD &amp; PROFESSIONAL</b> SEWING MACHINES, OVERLOCK MACHINES AND MOTORS FOR NON-ELECTRIC SEWING MACHINES	8452.10 / 8452.90.10
II-47	ELECTRIC BELLS	8531.80.40
II-48	INSECT KILLERS	8543.89
II-49	<b>PORTABLE &amp; TRANSPORTABLE</b> POWER TOOLS (e.g. DRILLS, SAWS, GRINDERS), PEDESTRIAN CONTROLLED MAINS-OPERATED LAWNMOWERS, HIGH-PRESSURE CLEANERS AND STEAM CLEANERS, WALK-BEHIND AND HAND-HELD LAWN TRIMMERS AND LAWN EDGE TRIMMERS, SCISSOR TYPE GRASS SHEARS, PORTABLE HEATING TOOLS INCL. SOLDERING IRONS AND THE LIKE UP TO <b>3500 WATTS</b> , <b>WELDING MACHINES UP TO 10 KW</b>	8424.30.90 / 8433.11.10 / 8467 / 8515.11 / <b>8515.39</b>
II-50	IMMERSION HEATERS, ULTRAVIOLET AND INFRARED SUN BEDS, WATER-BED HEATERS, ELECTRIC BLANKETS, HEATING PADS, FOOT WARMERS, APPLIANCES AND PUMPS FOR USE WITH AQUARIUM, GARDEN PONDS, TABLE FOUNTAINS AND WHIRLPOOL BATHS UP TO 3500 WATTS AND SAUNA HEATERS UP TO 8000 WATTS, DRIVES FOR GARAGE DOORS, ROLLING SHUTTERS, AWNINGS, BLINDS, GATES, DOORS, WINDOWS AND THE LIKE FOR RESIDENTIAL USE	8516.10.80 / 8516.79 / 6301.10 / 9018.20 / 8501.40 / 8543.89.96
<b>II-51</b>	<b>COMMERCIAL DISPENSING APPLIANCES &amp; VENDING MACHINES UP TO 3500 WATTS</b>	<b>8467</b>

II-21\* Applied only on products operating on AC electric mains supply or supplied with AC-DC adaptor or battery charger

**Public Authority for Industry  
Kuwait Conformity Assurance Scheme (KUCAS)  
Guidelines**

**13 July 2008**



**GROUP III: AUTOMOTIVE**

Pr.No.	Item (Class: Non-Process)	Harmonised System Commodity Codes
III-01a	PASSENGER AUTOMOBILES, TRUCKS, BUSES AND MULTI-PURPOSE VEHICLES (NEW) NOT HOLDING GCC CONFORMITY CERTIFICATE	8701.20 / 8702 / 8703 / 8704
III-01b	PASSENGER AUTOMOBILES, TRUCKS, BUSES AND MULTI-PURPOSE VEHICLES (USED)	8701 / 8702 / 8703 / 8704
III-04	NEW TYRES FOR PASSENGER AUTOMOBILES, TRUCKS, BUSES AND MULTI-PURPOSE VEHICLES	4011.10 / 4011.20

**GROUP IV: CHEMICAL**

Pr.No.	Item (Class: Process)	Harmonised System Commodity Codes
IV-01	ENGINE, GEAR AND TRANSMISSION OILS, BRAKE FLUID	2710.19/ 3819.00
IV-02	PAINTS AND PUTTIES (FOR BUILDINGS & ROADS)	3208 / 3209 / 3214.10

**GROUP V: OTHERS**

Pr.No.	Item (Class: Process)	Harmonised System Commodity Codes
V-09	FACIAL TISSUE PAPER	4818.20
V-12	MELAMINE DINNERWARE	3924.10

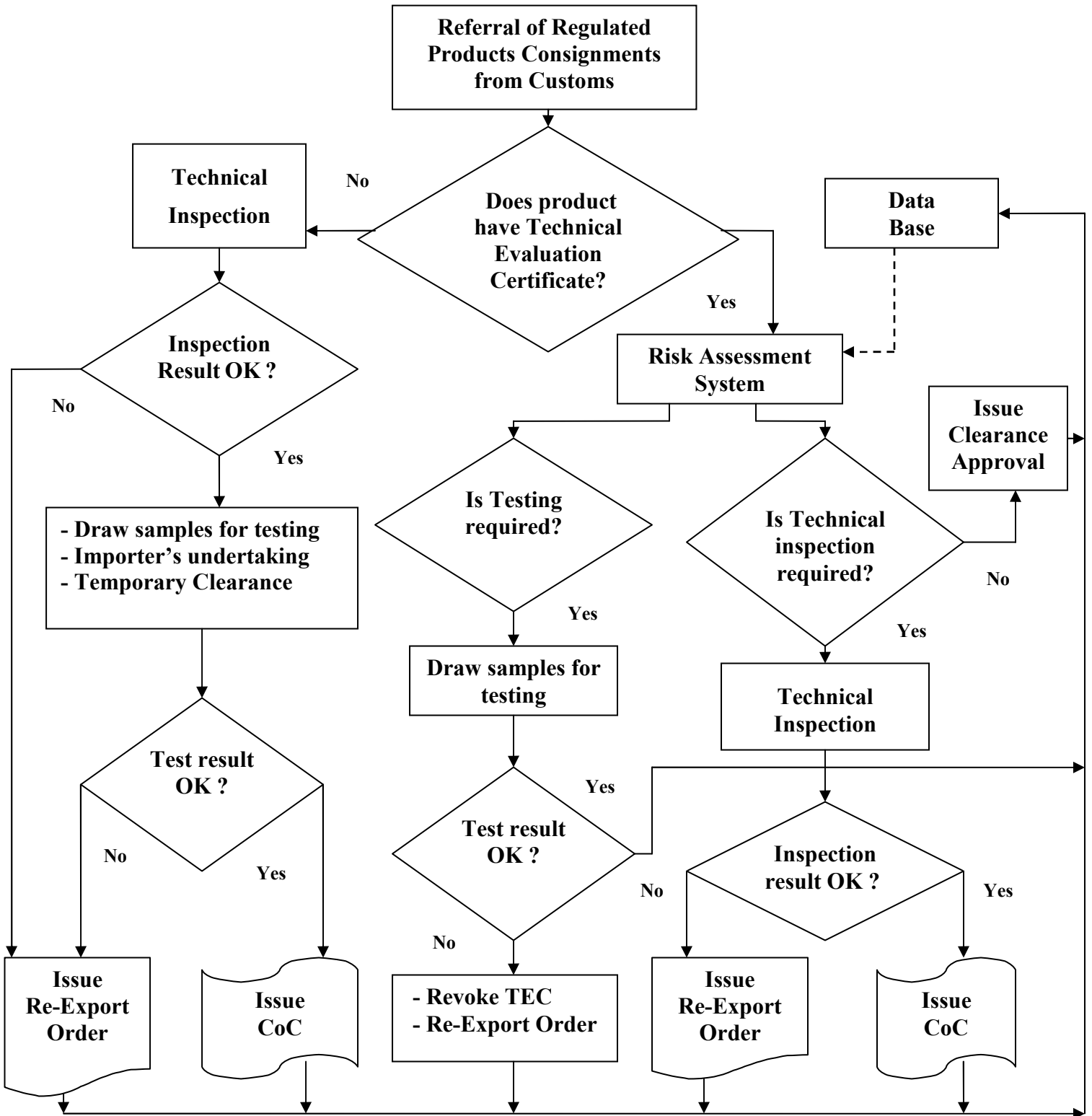
**GROUP VI: BUILDING MATERIALS**

Pr.No.	Item (Class: Process)	Harmonised System Commodity Codes
VI-03	CEMENT	2523.21/ 2523.29
VI-05	GYPSON	2520.20
	<b>Item (Class: Non-Process)</b>	
VI-06	PLASTIC & METAL ELECTRICAL CONDUITS & FITTINGS	3917
VI-07	CPVC PIPES & FITTINGS FOR WATER DISTRIBUTION	3917.23





**Conformity Assurance Procedures**



**Figure A**